

ESTIMATED COMPLETION SUMMER 2024

318,243 SQUARE FOOT INDUSTRIAL BUILDING

WPT COMMERCE CENTER

14874 SANTA ANA AVENUE, FONTANA, CALIFORNIA



Voit

REAL ESTATE SERVICES



SCAN TO VIEW LIVE
CONSTRUCTION
CAMERA

INSTITUTIONALLY OWNED BY:

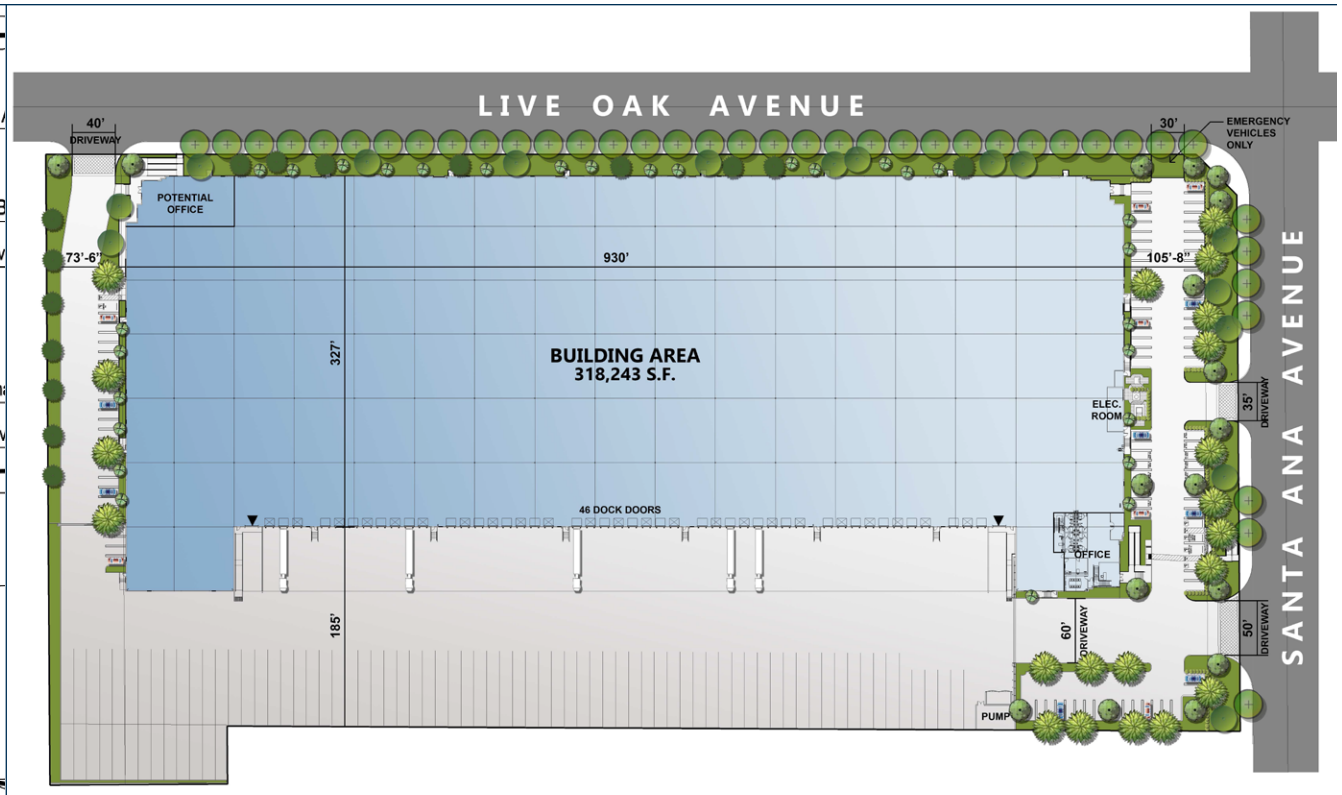
WPT

CAPITAL ADVISORS

14874 SANTA ANA AVENUE

FONTANA, CALIFORNIA

PROPERTY OVERVIEW



-  318,243 SQUARE FOOT INDUSTRIAL BUILDING
-  7,009 SQUARE FOOT OFFICE (TWO STORY)
-  ESFR SPRINKLER SYSTEM
-  99 AUTO PARKING SPACES
-  36' CLEARANCE HEIGHT
-  46 DOCK HIGH DOORS
-  DOCK LEVELERS EVERY OTHER DOOR
-  2 GROUND LEVEL DOORS
-  84 TRAILER PARKING STALLS
-  ALL CONCRETE



REAL ESTATE SERVICES

3280 E. GUSTI ROAD, SUITE 100 | ONTARIO | CALIFORNIA 91761 | VOITCO.COM

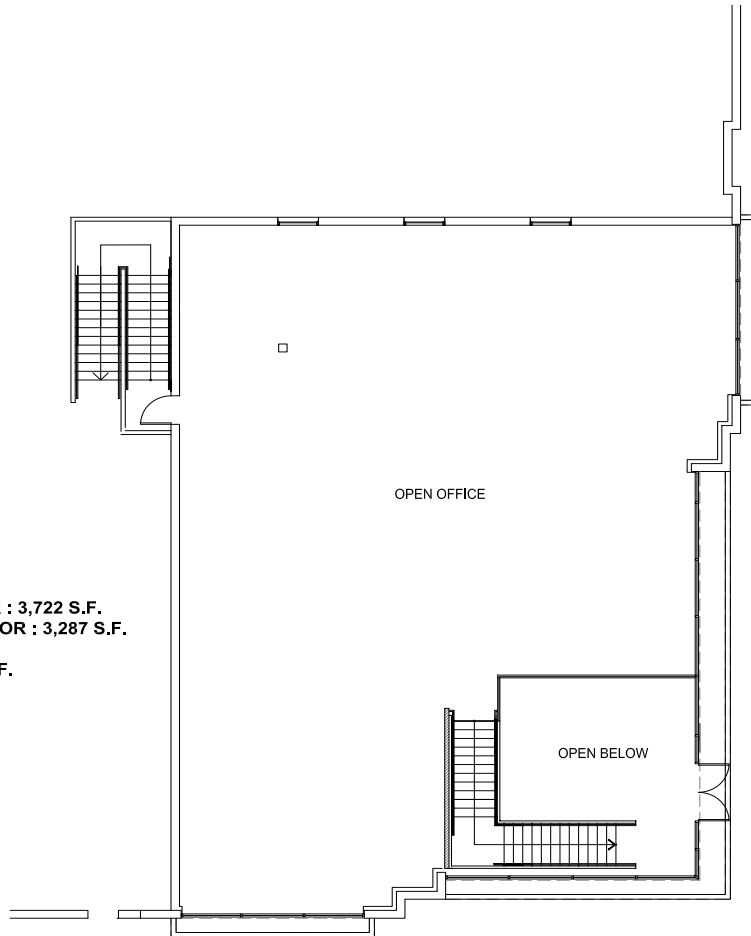
JUAN GUTIERREZ, SIOR
 EXECUTIVE VICE PRESIDENT
 909.545.8008
 jgutierrez@voitco.com
 License #01777990

BRAD FOX, SIOR
 SENIOR VICE PRESIDENT
 909.545.8012
 bfox@voitco.com
 License #01930328

14874 SANTA ANA AVENUE

FONTANA, CALIFORNIA

SPEC. OFFICE LAYOUT

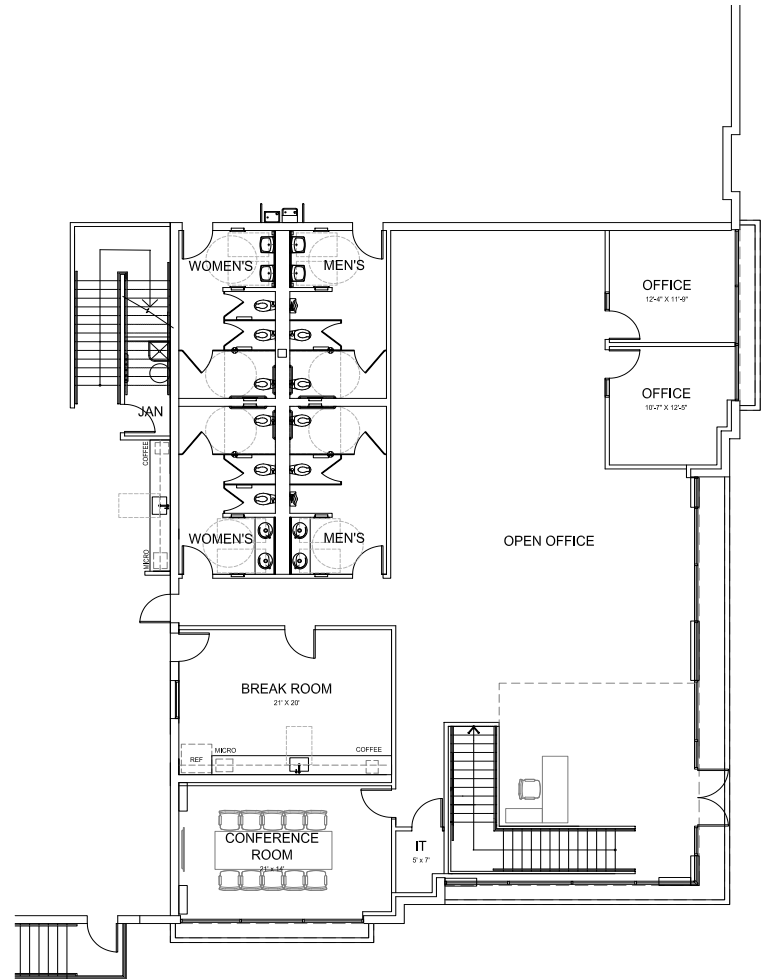


AREA

GROUND FLOOR : 3,722 S.F.
MEZZANINE FLOOR : 3,287 S.F.

TOTAL : 7,009 S.F.

MEZZANINE FLOOR PLAN
scale: 3/16"=1'-0" **B**



GROUND FLOOR PLAN
scale: 3/16"=1'-0" **A**



REAL ESTATE SERVICES

3280 E. GUAISTI ROAD, SUITE 100 | ONTARIO | CALIFORNIA 91761 | VOITCO.COM

JUAN GUTIERREZ, SIOR
EXECUTIVE VICE PRESIDENT
909.545.8008
jgutierrez@voitco.com
License #01777990

BRAD FOX, SIOR
SENIOR VICE PRESIDENT
909.545.8012
bfox@voitco.com
License #01930328

14874 SANTA ANA AVENUE

FONTANA, CALIFORNIA

TENANT AERIAL



14874 SANTA ANA AVENUE

FONTANA, CALIFORNIA

LOCATION MAP



CONTACT INFORMATION

WPT COMMERCE CENTER

14874 SANTA ANA AVENUE, FONTANA, CALIFORNIA



WWW.WPTCOMMERCECENTER.COM

Voit
REAL ESTATE SERVICES

JUAN GUTIERREZ, SIOR
EXECUTIVE VICE PRESIDENT
909.545.8008
jgutierrez@voitco.com
License #01777990

BRAD FOX, SIOR
SENIOR VICE PRESIDENT
909.545.8012
bfox@voitco.com
License #01930328



SCAN TO VIEW LIVE
CONSTRUCTION
CAMERA

INSTITUTIONALLY OWNED BY:

WPT
CAPITAL ADVISORS